

Zone

3

Mineralvandsfabrikken

CARLSBERG CITY DISTRICT



SPACE UNIT *No. 29*
*Mineralvands-
fabrikken*

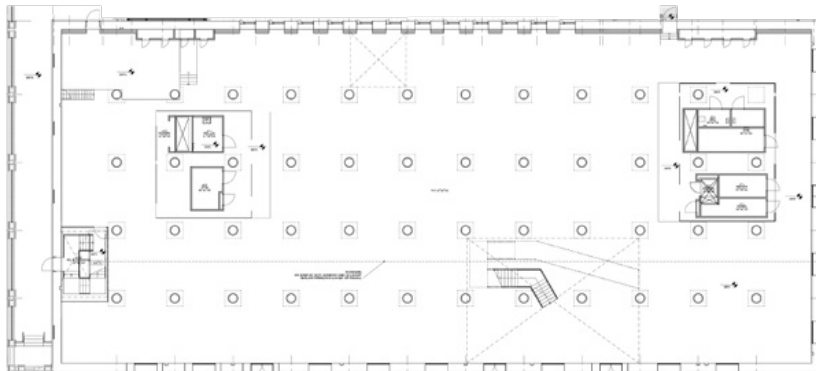
Mineralvandsfabrikken (The Mineral Water Factory) and the associated warehouse were built to meet the demand of brewer J.C. Jacobsen's pioneering soda production in the early 1900s, and to handle both production and storage of Carlsberg's popular soft drinks. The building was built in 1920-1927, and designed by the architect Carl Harild, who also designed several of the other listed buildings on the old brewery site e.g., Maskincentralen and Kedelhallen. The beautiful industrial setting requires a cautious design and fitting emphasizing the characteristics of the building. The renowned architecture firm Dorte Mandrup have carefully transformed the building, clearly influenced by the many rows of pillars and ceiling-high windows, creating a majestic yet light atmosphere.

AREA 3,620 sqm

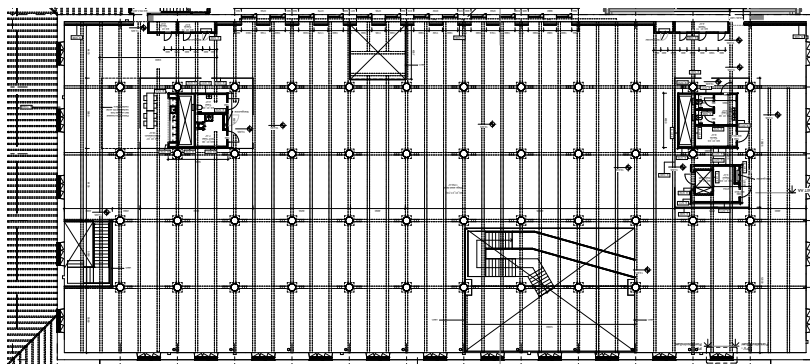


SPACE UNIT *No. 29*
Mineralvandsfabrikken

Architect: Dorte Mandrup



Ground floor



1st floor





The new Copenhagen City District

In Danish: Carlsberg Byen

The former home to the world-famous Carlsberg Breweries in the heart of Copenhagen is more than 170 years old and is currently being transformed into a new vibrant city district. The site is part of the Danish cultural heritage, not least because it is home to many of Copenhagen's architectural treasures.

Carlsberg's history has always been a love affair between science and culture. From the very beginning, quality products went hand in hand with plenty of creative energy and a generous contribution to life in the city. This valuable spirit continues as a central tenet of the development of the new Carlsberg City District.

When Carlsberg City District is fully developed in 2024, the area will comprise a mix of old, industrial brick buildings and new, modern architecture to offer a unique combination of private homes and urban squares, green parks, cultural and educational institutions, colourful shopping streets and thriving businesses.

Projected visitors

2024 ~ 5,300,000

2026 ~ 7,200,000

2030 ~ 7,600,000

Urban life – multiplicity and diversity

Carlsberg City District will be a genuine child of Copenhagen; well intertwined with its neighbours, but with its own unique identity. Every feature of the city district will generate life and vitality. Intense yet peaceful. Crazy yet down-to-earth. The district will have a clear international orientation, but it will also have its unique position in culture and heritage. A rich environment for the arts will unite with cultural and age diversity as well as vibrant commerce to create an attractive and safe district. Carlsberg City District will be used and developed by people who dream to inhabit the essence of Copenhagen.

<i>Residents</i>	~ 8,000
<i>Employees in the Area</i>	~ 12,000
<i>Students at KP Campus</i>	~ 10,000
<i>Children at Int. Primary School</i>	~ 1,000
<i>Kindergartens</i>	~ 3
<i>Neighboring Underground Car Parking</i>	~ 3,000
<i>Underground Bike Parking</i>	~ 20,000
<i>Hotel</i>	~ 1
<i>New Urban Spaces</i>	~ 23
<i>Parks</i>	~ 3





COPENHAGEN



ØSTERBRO

NØRREBRO

National
Gallery of
Denmark
3 km

Amalienborg

Opera
House

CITY CENTER

FREDERIKSBERG

*Carlsberg
City
District*

VESTERBRO

CPH Central
Station 2 km

Metro Station
500m

Carlsberg City
District S-Train
Station

Easy access to
CPH Ring Road
20 min drive

AMAGER

CPH Airport
15 min. drive
25 min by train

Peter Bur
Partner and Creative Director

+45 61611656
pba@briqgroup.com

www.carlsbergbyen.dk/highstreet
www.briqgroup.com/work/carlsberg-city



Not all articles, photographs, graphics, etc. that appear in this material, belong to Carlsberg City District and BRIQ. The document is made available for viewing / reading purposes only.

The material does not reflect the final commercial contract and some ideas may not be realized.

Developed by BRIQ for Carlsberg City District.